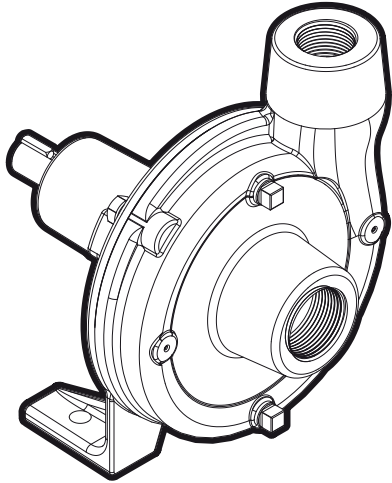


Frame Mount FAOT



Specifications:

Capacities: 454 LPM (120 US GPM)

Heads: 25.9 M (85 feet)

Working Pressure: 8.2 bar (120 psi)

Temperature: 100°C (212°F)

Rotation: clockwise viewed from motor end

Pipe Connections: NPT

| Discharge | Suction |
|-----------|---------|
| 1" | 1-1/4" |
| 1-1/4" | 1-1/2" |
| 1-1/2" | 2" |

Features:

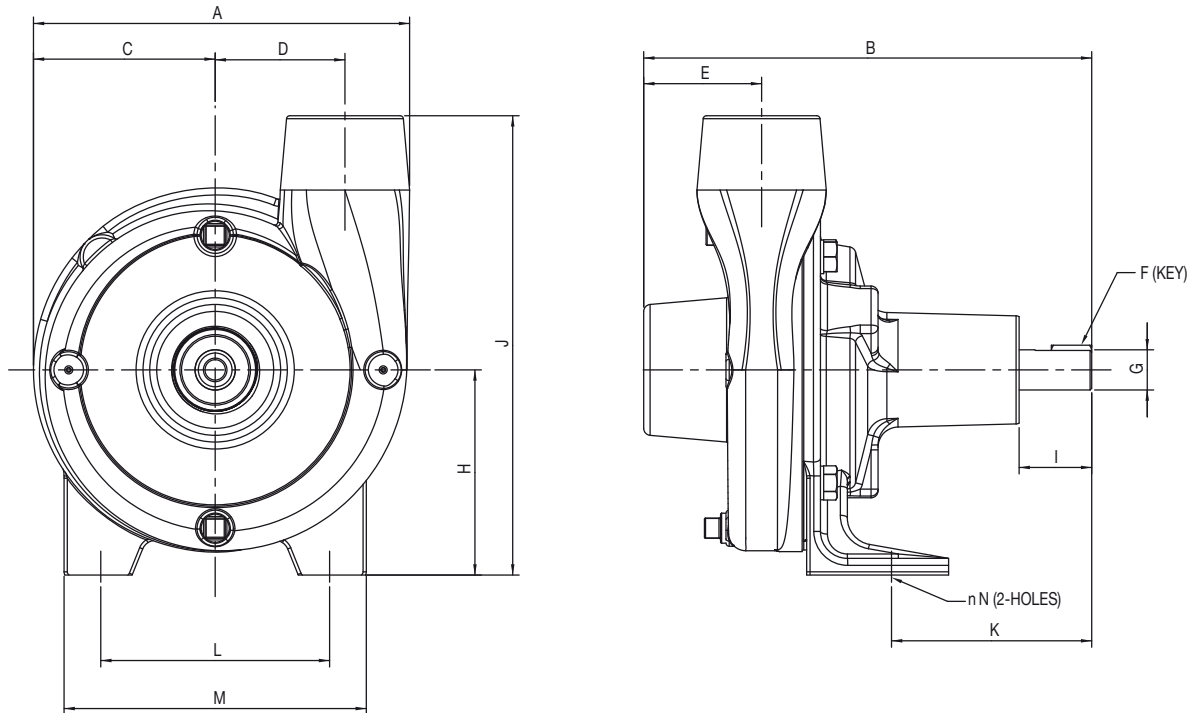
- **Volute:** Cast iron volute can be rotated for ease of installation. Tapped openings provided for venting and draining.
- **Impeller:** Open face design for solids handling, cast iron construction.
- **Mechanical Seal:** Standard with carbon/ceramic faces, BUNA elastomers and 300 series stainless components.
- **Bearing Frame:** For belt or direct drive.
- **Mounting:** Can be mounted in a vertical or horizontal position.

Applications:

- Water Circulation
- Booster Service
- Liquid Transfer
- Spraying System
- Jockey Pump
- General Service

Frame Mount FAOT

Dimensional Drawings:



Dimensions:

| Model | Dis. x Suc. | A | B | C | D | E | F | G | H | I | J | K | L | M | N |
|--------|-------------|------|------|------|------|------|-----|-----|------|------|------|------|------|------|-----|
| FAOT-4 | 1 x 1.25 | 7.12 | 7.37 | 3.37 | 2.37 | 1.75 | .25 | .75 | 3.75 | 1.25 | 8.5 | 3.75 | 4.25 | 5.62 | .50 |
| FAOT-5 | 1.25 x 1.5 | 7.12 | 8.37 | 2.37 | 2.25 | 1.75 | .25 | .75 | 3.75 | 1.25 | 8.5 | 3.75 | 4.25 | 4.62 | .50 |
| FAOT-6 | 1.5 x 2 | 7.75 | 8.75 | 3.75 | 2.37 | 1.87 | .25 | .75 | 4.25 | 1.25 | 9.25 | 3.75 | 4.25 | 5.62 | .50 |

Note: Dimensions are for estimating purposes only. All dimensions in inches.

Ordering Information:

| Frame Mount FAOT | | | | | |
|-------------------------|----------|-----------------|-------------------|--------------|-----------|
| Pump Size (Dis. x Suc.) | Rotation | Shaft Sealing | Model Description | Order Number | Weight lb |
| 1 x 1-1/4 | CW | Mechanical Seal | FAOT-4 | 90251004 | 18 |
| 1-1/4 x 1-1/2 | CW | Mechanical Seal | FAOT-5 | 90251005 | 19 |
| 1-1/2 x 2 | CW | Mechanical Seal | FAOT-6 | 90251006 | 21 |

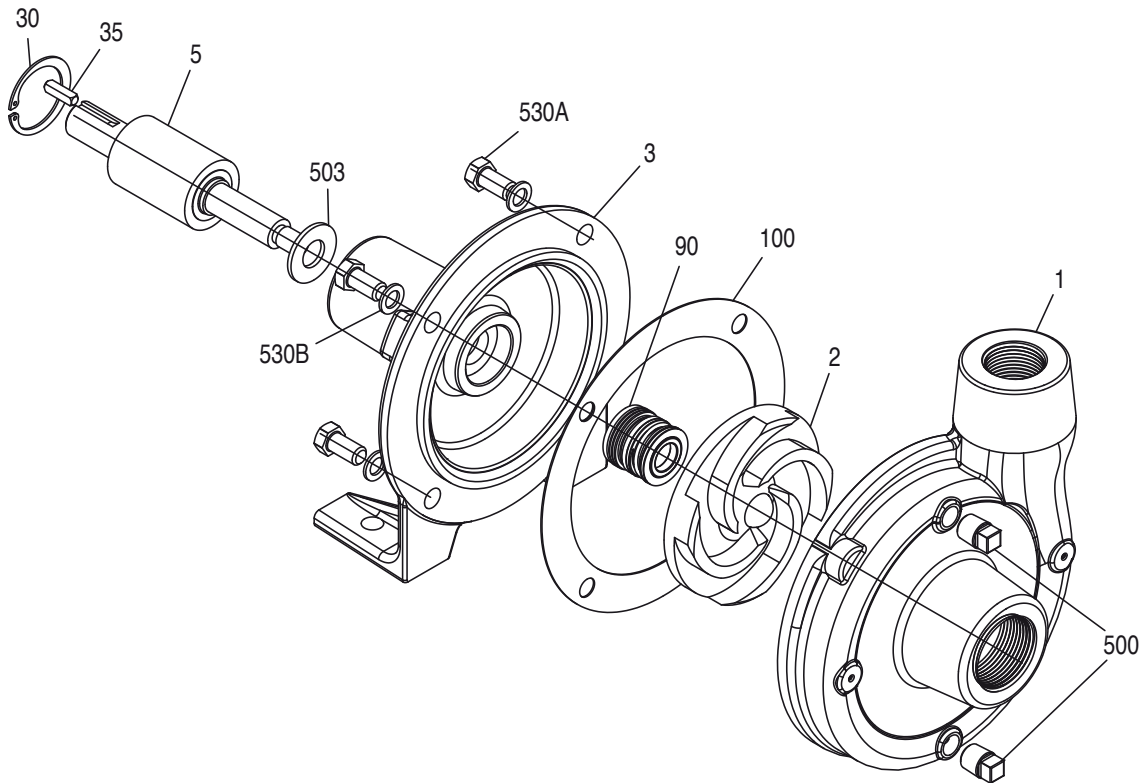
Note: All weight in pounds.

1" = 25.4 mm

1 lb = 0.373 kg

Frame Mount FAOT

Exploded Parts Drawing:



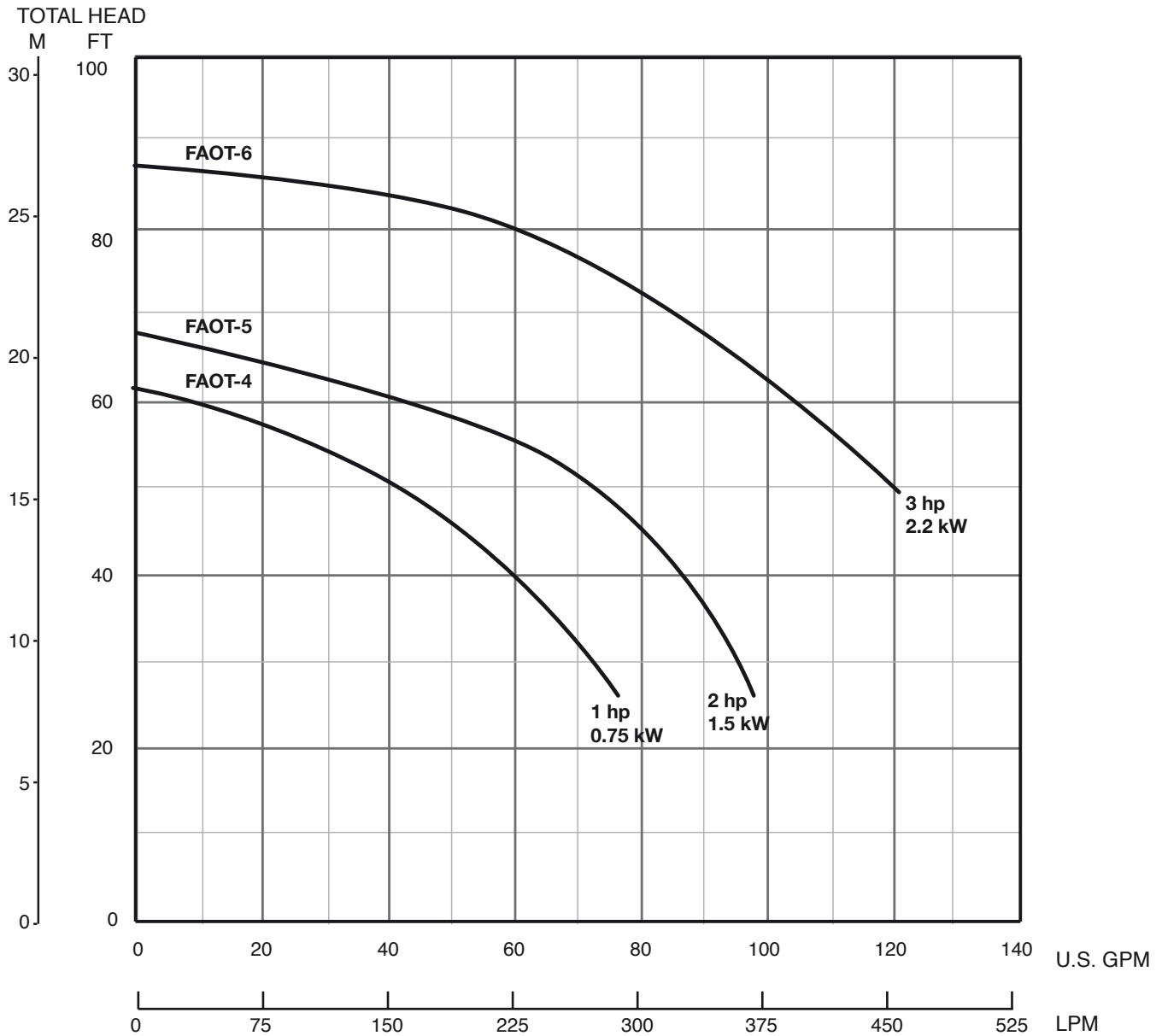
Materials and Parts:

| Fig. No. | Part Description | Part No. | | | Materials of Construction |
|----------|--------------------------------|-----------|-----------|-----------|---------------------------|
| | | FAOT-4 | FAOT-5 | FAOT-6 | |
| 1 | Volute Case | 305453001 | 305453015 | 305453016 | Cast Iron, ASTM-A48 CL30 |
| 2 | Impeller | 305717002 | 305453053 | 305453054 | Cast Iron, ASTM-A48 CL30 |
| 3 | Transmission Housing | 305453003 | | 305453055 | Cast Iron, ASTM-A48 CL30 |
| 5 | Shaft/Bearing Assembly | 305453004 | | | Misc. |
| 30 | Retaining Ring | 305463027 | | | Steel |
| 35 | Shaft Key | 305463028 | | | 301 Stainless Steel |
| 90 | Mechanical Shaft Seal | 305463029 | | | Carbon/Ceramic/BUNA X SS |
| 100 | Gasket | 305453007 | 305453024 | | NA60 |
| 503 | Water Slinger | 305453005 | | | Neoprene |
| 500 | Pipe Plug (3-pack) | 305463020 | | | CAD Plated Steel |
| 530A | Bracket Hex Cap Screw (4-pack) | 305463030 | | | Zinc Plated Steel |
| 530B | Washer (4-pack) | 305453006 | | | Aluminum |

Frame Mount FAOT

Performance Curve:

3600 rpm
 Nominal
 Curve speed: 3450 rpm



| | | | |
|----|------|-----|-----|
| hp | 1 | 2 | 3 |
| kW | 0.75 | 1.5 | 2.2 |



Franklin Electric

Franklin Electric (Aust) Pty Ltd
 106-110 Micro Circuit
 Dandenong South, Vic 3175
 Tel: +61 3 9799 5000

Toll Free: 1300 FRANKLIN
franklinwater.com/au