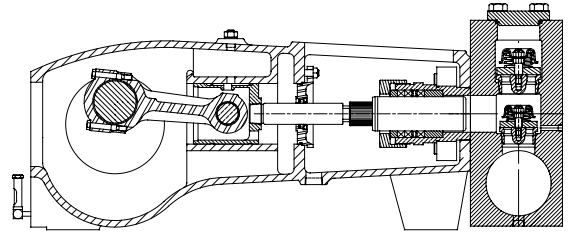


QUINTUPLEX PLUNGER PUMP

APLEX SERIES SC-300 (L)(H)



INTERMITTENT DUTY ONLY

NO. OF PLUNGERS	5
MAXIMUM RATED SPEED SC-300 (H)	450 rpm
MAXIMUM RATED SPEED SC-300L	400 rpm
STROKE LENGTH	4.25 in (107.95 mm)
MAXIMUM RATED POWER	400 hp (298 kW)
MAXIMUM ROD LOAD SC-300 (H)	14,908 lbs (66.19 kN)
MAXIMUM ROD LOAD SC-300L	16,780 lbs (74.50 kN)
WEIGHT SC-300 (H)	3600 lbs.
WEIGHT SC-300L	4800 lbs.

SC-300 ENGLISH UNITS

PLUNGER SIZE IN.	STUFFING BOX BORE IN.	MAX PSI	*GALLON PER/ REV.	250 RPM US GPM	300 RPM US GPM	350 RPM US GPM	400 RPM US GPM	450 RPM US GPM
3.500	4.500	1550	0.885	221.3	265.5	309.8	354.0	398.3
3.375	4.500	1666	0.823	205.7	246.9	288.0	329.2	370.3
3.250	4.500	1797	0.763	190.8	228.9	267.1	305.3	343.4
3.125	4.000	1944	0.706	176.4	211.7	246.9	282.2	317.5
3.000	4.000	2109	0.650	162.6	195.1	227.6	260.1	292.6
2.875	4.000	2296	0.597	149.3	179.2	209.0	238.9	268.7
2.750	4.000	2510	0.546	136.6	163.9	191.2	218.6	245.9
2.625	4.000	2755	0.498	124.5	149.4	174.2	199.1	224.0
2.500	3.250	3037	0.452	112.9	135.5	158.0	180.6	203.2
2.375	3.250	3365	0.408	101.9	122.3	142.6	163.0	183.4
hp REQUIRED @ RPM				222.4	266.9	311.4	355.9	400.0

SC-300 METRIC UNIT

PLUNGER SIZE MM	STUFFING BOX BORE MM	MAX PRESS. BAR	*LITER PER/ REV	250 RPM LPM	300 RPM LPM	350 RPM LPM	400 RPM LPM	450 RPM LPM
88.9	114.3	106.9	3.351	837.6	1005.2	1172.7	1340.2	1507.7
85.7	114.3	114.9	3.115	778.9	934.6	1090.4	1246.2	1401.9
82.6	114.3	123.9	2.889	722.1	866.6	1011.0	1155.4	1299.9
79.4	101.6	134.0	2.671	667.8	801.3	934.8	1068.4	1201.9
76.2	101.6	145.4	2.462	615.4	738.5	861.6	984.7	1107.8
73.0	101.6	158.3	2.261	565.2	678.2	791.2	904.3	1017.3
69.9	101.6	173.1	2.068	517.1	620.5	723.9	827.3	930.7
66.9	101.6	190.1	1.884	471.1	565.3	659.5	753.8	848.0
63.5	82.6	209.4	1.710	427.4	512.9	598.3	683.8	769.3
60.3	82.6	232.0	1.543	385.6	462.8	539.9	617.0	694.2
kW REQUIRED @ RPM				165.8	199.0	232.2	265.4	298.3

SC-300H ENGLISH UNITS

PLUNGER SIZE IN.	STUFFING BOX BORE IN.	MAX PSI.	* GALLON PER/ REV.	250 RPM US GPM	300 RPM US GPM	350 RPM US GPM	400 RPM US GPM	450 RPM US GPM
2.125	3.250	4203	0.3263	81.6	97.9	114.2	130.5	146.8
2.000	2.875	4745	0.2890	72.3	86.7	101.2	115.6	130.1
1.875	2.875	5399	0.2540	63.5	76.2	88.9	101.6	114.3
1.750	2.875	6198	0.2213	55.3	66.4	77.4	88.5	99.6
hp REQUIRED @ RPM				222.3	266.8	311.2	355.7	400.0

SC-300H METRIC UNIT

PLUNGER SIZE MM.	STUFFING BOX BORE MM.	MAX PRESS. BAR	* LITER PER/ REV.	250 RPM LPM	300 RPM LPM	350 RPM LPM	400 RPM LPM	450 RPM LPM
53.9	82.5	289.8	1.2352	308.8	370.6	432.3	494.1	555.8
50.8	73.0	327.2	1.0944	273.6	328.3	383.0	437.8	492.5
47.6	73.0	372.3	0.9645	241.1	289.4	337.6	385.8	434.0
44.4	73.0	427.4	0.8377	209.4	251.3	293.2	335.1	377.0
kW REQUIRED @ RPM				165.8	199.0	232.1	265.2	298.3

SC-300L ENGLISH UNITS

PLUNGER SIZE IN.	STUFFING BOX BORE IN.	MAX PSI	*GALLON PER/ REV.	200 RPM US GPM	250 RPM US GPM	300 RPM US GPM	350 RPM US GPM	400 RPM US GPM
4.500	5.250	1055	1.463	292.6	365.8	438.9	512.1	585.2
4.375	5.250	1116	1.383	276.6	345.7	414.9	484.0	553.2
4.250	5.250	1181	1.305	261.0	326.3	391.5	456.8	522.0
4.125	5.000	1254	1.229	245.9	307.3	368.8	430.3	491.8
4.000	5.000	1334	1.156	231.2	289.0	346.8	404.6	462.4
3.875	5.000	1422	1.085	217.0	271.2	325.5	379.7	434.0
3.750	5.000	1518	1.016	203.2	254.0	304.8	355.6	406.4
3.625	4.500	1626	0.949	189.9	237.4	284.8	332.3	379.8
hp REQUIRED @ RPM				200.2	250.2	300.3	350.3	400.0

SC-300L METRIC UNIT

PLUNGER SIZE MM	STUFFING BOX BORE MM	MAX PRESS. BAR	*LITER PER/ REV.	200 RPM LPM	250 RPM LPM	300 RPM LPM	350 RPM LPM	400 RPM LPM
114.3	133.4	72.7	5.538	1107.7	1384.6	1661.5	1938.4	2215.4
111.1	133.4	76.9	5.235	1047.0	1308.7	1570.4	1832.2	2093.9
108.0	133.4	81.4	4.940	988.0	1235.0	1482.0	1729.0	1976.0
104.8	127.0	86.5	4.654	930.8	1163.5	1396.1	1628.8	1861.5
101.6	127.0	92.0	4.376	875.2	1094.0	1312.8	1531.6	1750.4
98.4	127.0	98.0	4.107	821.4	1026.7	1232.0	1437.4	1642.7
95.3	127.0	104.7	3.846	769.2	961.5	1153.8	1346.1	1538.4
92.1	114.3	112.1	3.594	718.8	898.5	1078.2	1257.9	1437.6
kW REQUIRED @ RPM				149.3	186.6	223.9	261.2	298.3

*Displacement based on 100% Volumetric Efficiency

Power based on 90% Mechanical Efficiency

$$I_{hp} = \frac{USGPM \times (\text{Discharge psig} - 1/2 \text{ Suction psig})}{1542}$$

$$PUMP \text{ RPM} = \frac{USGPM \text{ Desired}}{USG \text{ per Revolution of Selected Plunger}}$$

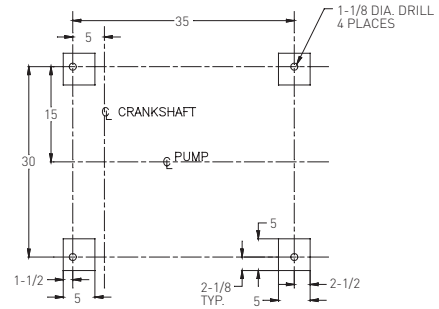
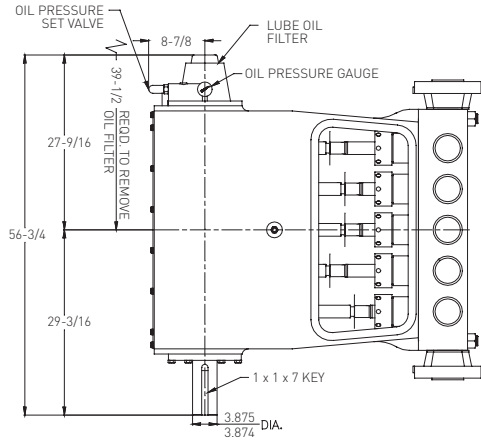
$$I_{kW} = \frac{M^3/HR \times (\text{Discharge Bar} - 1/2 \text{ Suction Bar})}{32.4}$$

$$PUMP \text{ RPM} = \frac{M^3/HR \text{ Desired}}{M^3 \text{ per Revolution of Selected Plunger}}$$

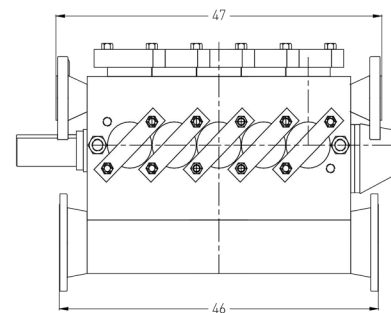
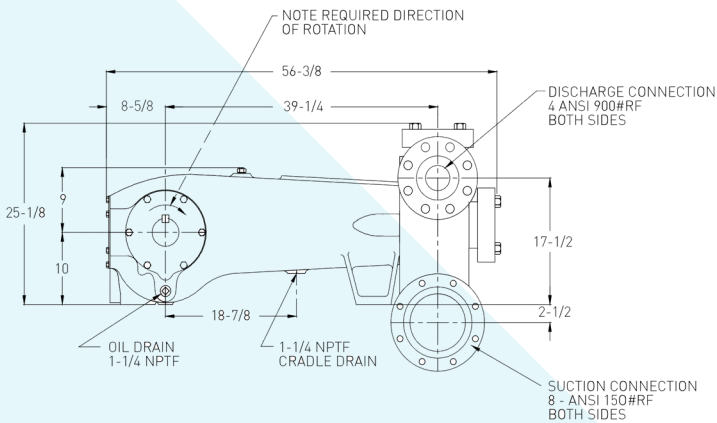
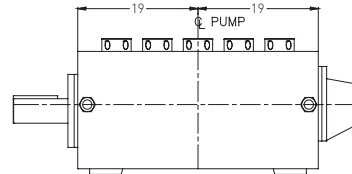
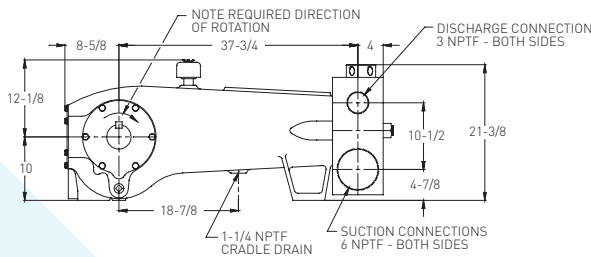
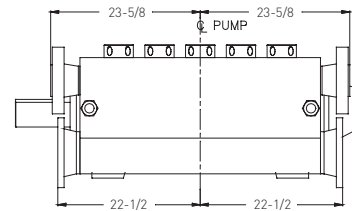
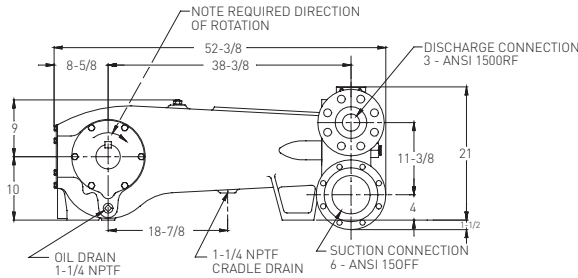
DIMENSIONAL DATA

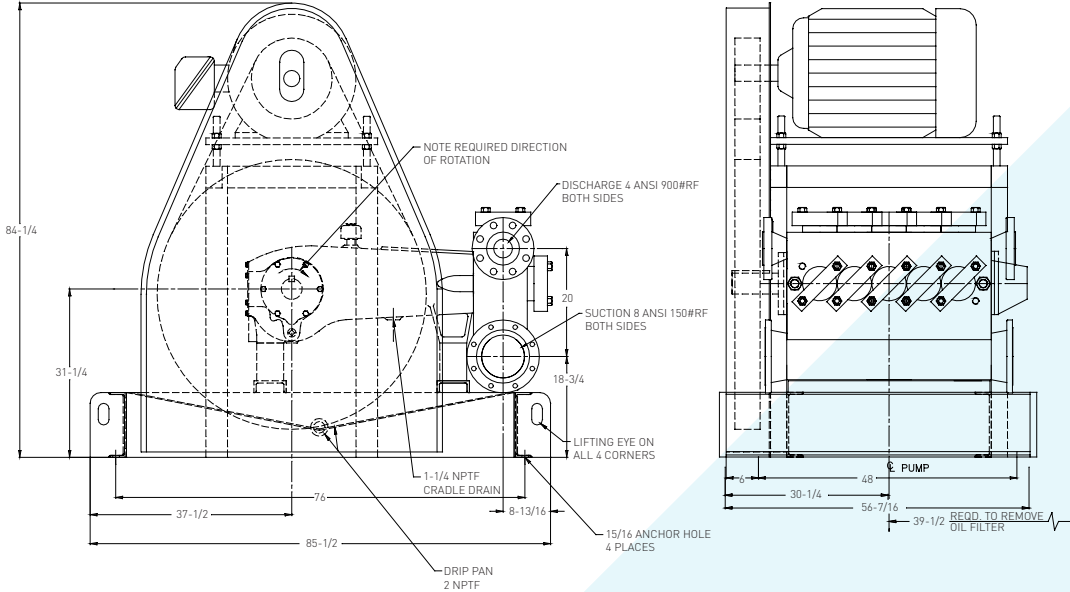
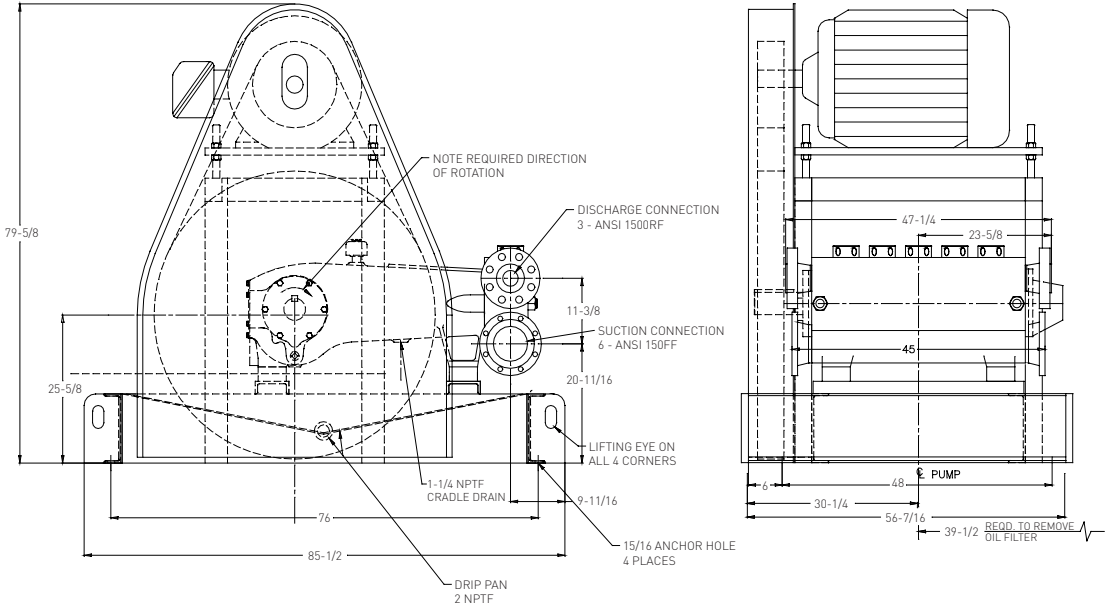
Measurements in inches.

SC-300 (L)(H) QUINTUPLEX PLUNGER PUMP



FOUNDATION PLAN







**1101 Myers Parkway,
Ashland, OH 44805, USA
Ph: 855.274.8948
Fx: 800.426.8947**

**490 Pinebush Road, Unit 4,
Cambridge, Ontario N1T 0A5, Canada
Ph: 800.363.7867**

pentair.com

All indicated Pentair trademarks and logos are property of Pentair. Third party registered and unregistered trademarks and logos are the property of their respective owners. Because we are continuously improving our products and services, Pentair reserves the right to change specifications without prior notice. Pentair is an equal opportunity employer.

Inconel® is a registered trademark of the Special Metals family of companies.
Timken® is a registered trademark of The Timken Company.

Rokide® is a registered trademark of Saint-Gobain Abrasives, Inc.

©2021 Pentair. All Rights Reserved.

MA3015 (10-15-21)