



PENTAIR
HYDROMATIC

24" X 24" SEWAGE BASIN PACKAGES

TOUGHNESS AND DURABILITY

Where You Need It The Most



pentair.com/hydromatic

HYDROMATIC® 24" X 24" SEWAGE BASIN PACKAGES

The 24" x 24" sewage basin is designed to be easily installed in a basement floor or anywhere that requires dirty water removal. This durable basin package design is perfect for basements with a toilet, washer, dishwasher or a sink that needs to be pumped.

- ◆ **PRE-ASSEMBLED FROM FACTORY**
For quick and easy installation
- ◆ **CAST IRON SEWAGE PUMPS**
For high performance
- ◆ **UP TO 82% THICKER BASIN***
For superior durability
- ◆ **SPECIALLY DESIGNED BOTTOM GROOVES**
For easy leveling in rough soil
- ◆ **MOLDED TORQUE STOPS**
Keep pump in place

*Compared to previous models and industry leaders' published data.

- 1 38.5-gallon capacity for longer pump cycles prolonging the pump life.
- 2 Pre-installed schedule 80 PVC pipe.
- 3 Robust polyethylene structure up to 82% thicker than competitive designs for superior durability*.
- 4 Five additional flats for adding or changing inlet pipe location.

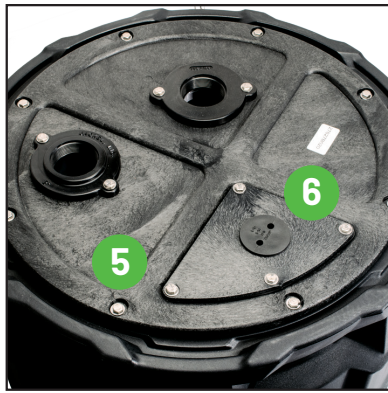
Get Peace of Mind with the Pre-Plumbed Basin and the Optional SA-1 Level Alert Alarm System

- ◆ **QUICK CONNECT TERMINAL BLOCK.**
- ◆ **CORROSION RESISTANT CONSTRUCTION.**
- ◆ **INDOOR, NEMA 1 ENCLOSURE.**
- ◆ **AUDIBLE AND VISUAL ALARM.**



*Compared to previous models and industry leaders' published data.





- 5 Corrosion resistant stainless steel bolts for a tight connection.
- 6 Easy access holes for quick inspection.



- 7 Molded torque-stops keep pump in place for maintenance free operation.



- 8 Specially designed pads and grooves on the bottom for easy leveling in rough soil.



- 9 True round inlet without pattern shift or parting line prevents leaks.

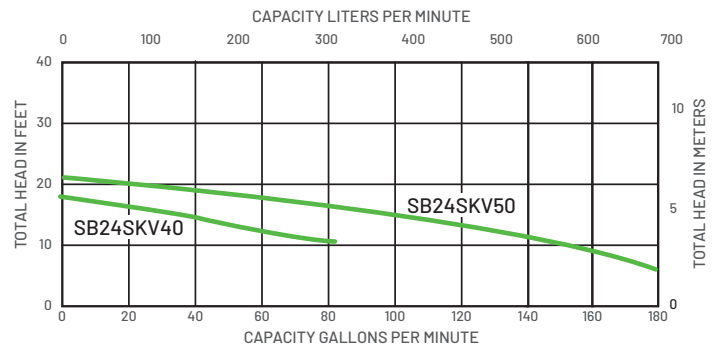
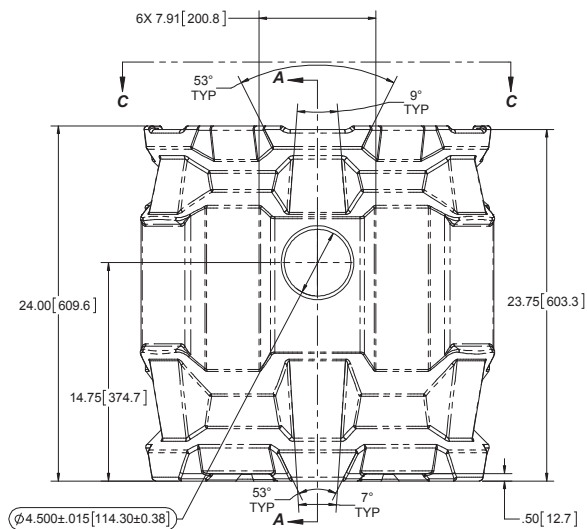
HYDROMATIC® 24" X 24" SEWAGE BASIN PACKAGES



ORDERING INFORMATION

Series	SB24SKV40		SB24SKV50	
Description	4/10 HP Packaged Sewage System		1/2 HP Packaged Sewage System	
HP	4/10		1/2	
Maximum Pump Capacity ¹	80 GPM	303 LPM	153 GPM	579 LPM
Maximum Shut-off Head	19.5'	5.9 m	10'	6.7 m
Discharge	2"	50.8 mm	2"	50.8 mm
Solids Handling	2"	50.8 mm	2"	50.8 mm
Volts	115		115	
Full Load Amps	12.6		12.0	
Phase	Single		Single	
Cord Length	10'	3.0 m	10'	3.0 m
Switch Options	PRE-T		PRE-T	
Pump Impeller Material	Thermoplastic		Thermoplastic	
Pump Housing Material	Cast Iron		Cast Iron	
Pump Volute Material	Cast Iron		Cast Iron	
Basin Material	Polyethylene		Polyethylene	
Basin Dimensions	24" W x 24" H	609 mm W x 609 mm H	24" W x 24" H	609 mm W x 609 mm H
Basin Capacity	38.5 Gallons	145.7 Liters	38.5 Gallons	145.7 Liters
Lid Material	Polyethylene		Polyethylene	
Warranty Years	3		3	

¹ at 10'



293 Wright Street
Delavan, WI 53115
USA
Ph: 888.987.8677
Orders Fax: 800.426.9446

490 Pinebush Road
Unit 4
Cambridge, Ontario N1T 0A5
Canada
Ph: 800.363.7867
Orders Fax: 888.606.5484

pentair.com/hydromatic

For a detailed list of where Pentair trademarks are registered, please visit www.pentair.com/en/registrations.html. Pentair trademarks and logos are owned by Pentair PLC, or its affiliates. Third party registered and unregistered trademarks and logos are the property of their respective owners. Because we are continuously improving our products and services, Pentair reserves the right to change specifications without prior notice. Pentair is an equal opportunity employer.

M12023SSE (12/03/19) ©2019 Pentair. All Rights Reserved.