



Customer information packet

CXL05122A

1HP, 3450RPM, 1PH, 60HZ, 56C, 3524L, XPFC, F1
Class - CLI GP D; CLII GP F,G
Division - Division I

Specifications

Enclosure	XPFC
Frame	56C
Frame Material	Steel
Frequency	60.00 Hz
Motor Letter Type	Cap Start, Induction Run
Output @ Frequency	1.000 HP @ 60 HZ
Phase	1
Synchronous Speed @ Frequency	3600 RPM @ 60 HZ
Voltage @ Frequency	115.0 V @ 60 HZ 230.0 V @ 60 HZ
XP Class and Group	CLI GP D; CLII GP F,G
XP Division	Division I
Agency Approvals	CSA UL
Ambient Temperature	40 °C
Auxillary Box	No Auxillary Box
Auxillary Box Lead Termination	None
Base Indicator	Rigid
Bearing Grease Type	Polyrex EM (-20F +300F)
Blower	None
Current @ Voltage	12.000 A @ 115.0 V 6.000 A @ 230.0 V
Design Code	N
Drip Cover	No Drip Cover
Duty Rating	CONT
Efficiency @ 100% Load	66.0 %
Electrically Isolated Bearing	Not Electrically Isolated
Feedback Device	NO FEEDBACK
Heater Indicator	No Heater
High Voltage Full Load Amps	6.0 a
Insulation Class	B
Inverter Code	Not Inverter

Part detail

Revision	C
Type	AC
Mech. spec.	
Base	
Status	PRD/A
Elec. spec.	35WG0498
Layout	35LYE365
Eff. date	06-28-2022
CD Diagram	CD0008
Poles	02
Leads	4#16 A&J,2#18 B PH,1#14 #4TH
Proprietary	False
Created date	03-15-2021

IP Rating	NONE
KVA Code	K
Lifting Lugs	No Lifting Lugs
Locked Bearing Indicator	Locked Bearing
Motor Lead Termination	Flying Leads
Motor Standards	NEMA
Motor Type	3524L
Mounting Arrangement	F1
Number of Poles	2
Overall Length	15.15 IN
Power Factor	81
Product Family	General Purpose
Pulley Face Code	C-Face
Rodent Screen	None
Service Factor	1.00
Shaft Diameter	0.625 IN
Shaft Ground Indicator	No Shaft Grounding
Shaft Rotation	Reversible
Speed	3450 rpm
Speed Code	Single Speed
Starting Method	Direct on line
Thermal Device - Bearing	None
Thermal Device - Winding	None
Vibration Sensor Indicator	No Vibration Sensor
Winding Thermal 1	None
Winding Thermal 1 Location	EP
Winding Thermal 2	None
XP Temp Code	T4

Nameplate

NP0016XPSL					
NO.		CC			
SER. #					
SPEC	35-0000-1073				
CAT.NO.	CXL05122A				
H.P.	1	T. CODE	T4		
VOLTS	115/230				
AMPS	12/6				
R.P.M.	3450 35WG0498				
HZ	60	PH	1	CLASS	B
SER.F.	1.00	DES	N	CODE	K
RATING	40C AMB-CONT				
FRAME	56C	NEMA NOM. EFF			66
USABLE AT 208V	N/A	PF	81		
BLANK	NEMA MG-1 PART 5, IP54				

AC Induction Motor Performance Data

Record # 61763

Typical performance - not guaranteed values

Winding: 35WG0498-R003		Type: 3524L		Enclosure: TEFC	
Nameplate Data			230 V, 60 Hz: High Voltage Connection		
Rated Output (HP)	1	Full Load Torque	1.5 LB-FT		
Volts	115/230	Start Configuration	direct on line		
Full Load Amps	12/6	Breakdown Torque	4.1 LB-FT		
R.P.M.	3450	Pull-up Torque	3.1 LB-FT		
Hz	60 Phase	1	Locked-rotor Torque	5 LB-FT	
NEMA Design Code	N	KVA Code	K	Starting Current	38.5 A
Service Factor (S.F.)	1.25		No-load Current	2.95 A	
NEMA Nom. Eff.	66	Power Factor	81	Line-line Res. @ 25°C	2.46 Ω A Ph 1.75 Ω B Ph
Rating - Duty	40C AMB-CONT		Temp. Rise @ Rated Load		
S.F. Amps	14.4/7.2		Temp. Rise @ S.F. Load		

Load Characteristics 230 V, 60 Hz, 1 HP

% of Rated Load	25	50	75	100	125	150	S.F.
Power Factor	50	64	75	81	84	86	84
Efficiency	49	65	67	69	68	67.5	68
Speed	3570	3550	3530	3505	3472	3445	3472
Line amperes	3.2	3.7	4.5	5.5	6.75	7.7	6.75

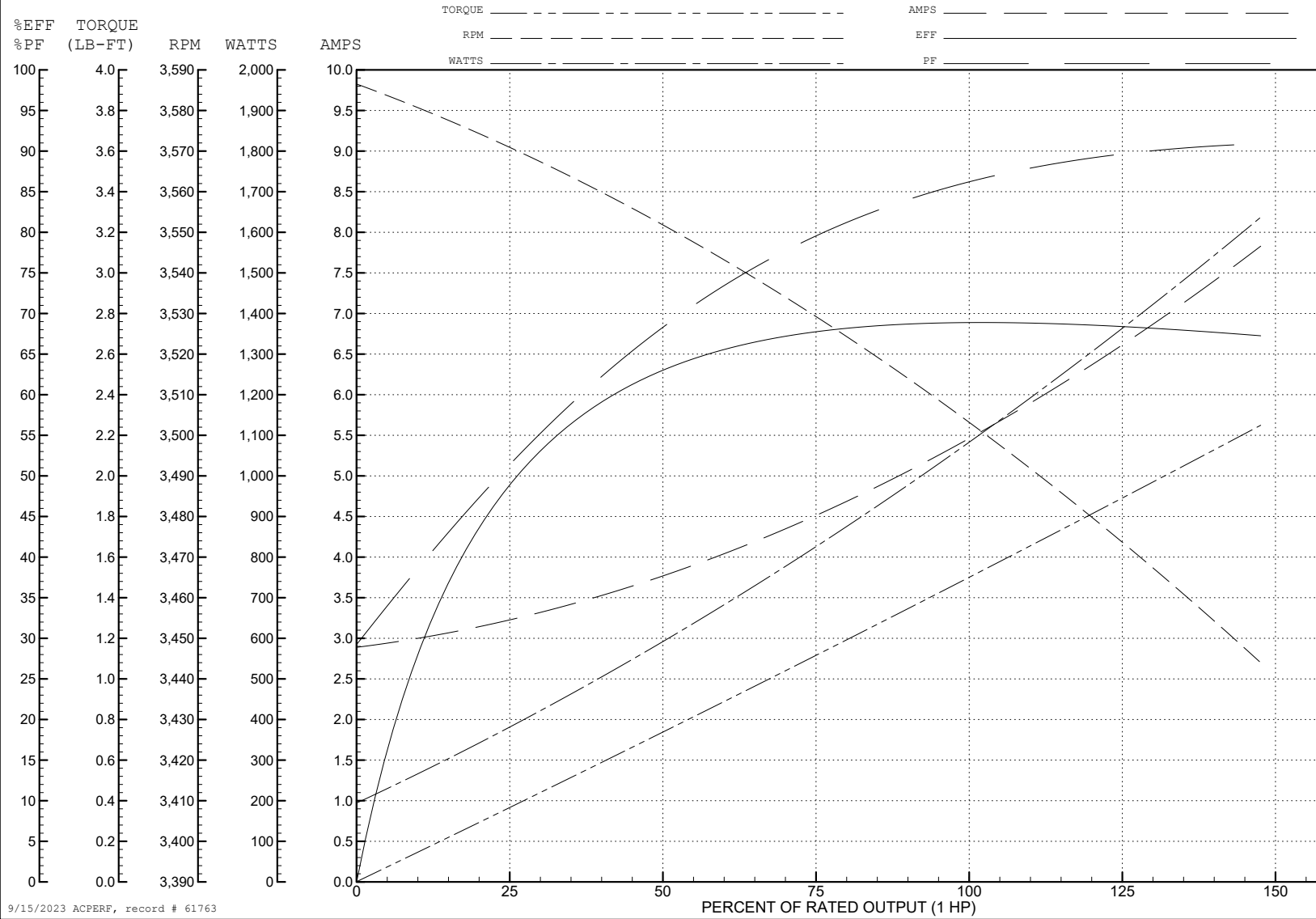
ABB Motors and Mechanical Inc.

WINDING # 35WG0498

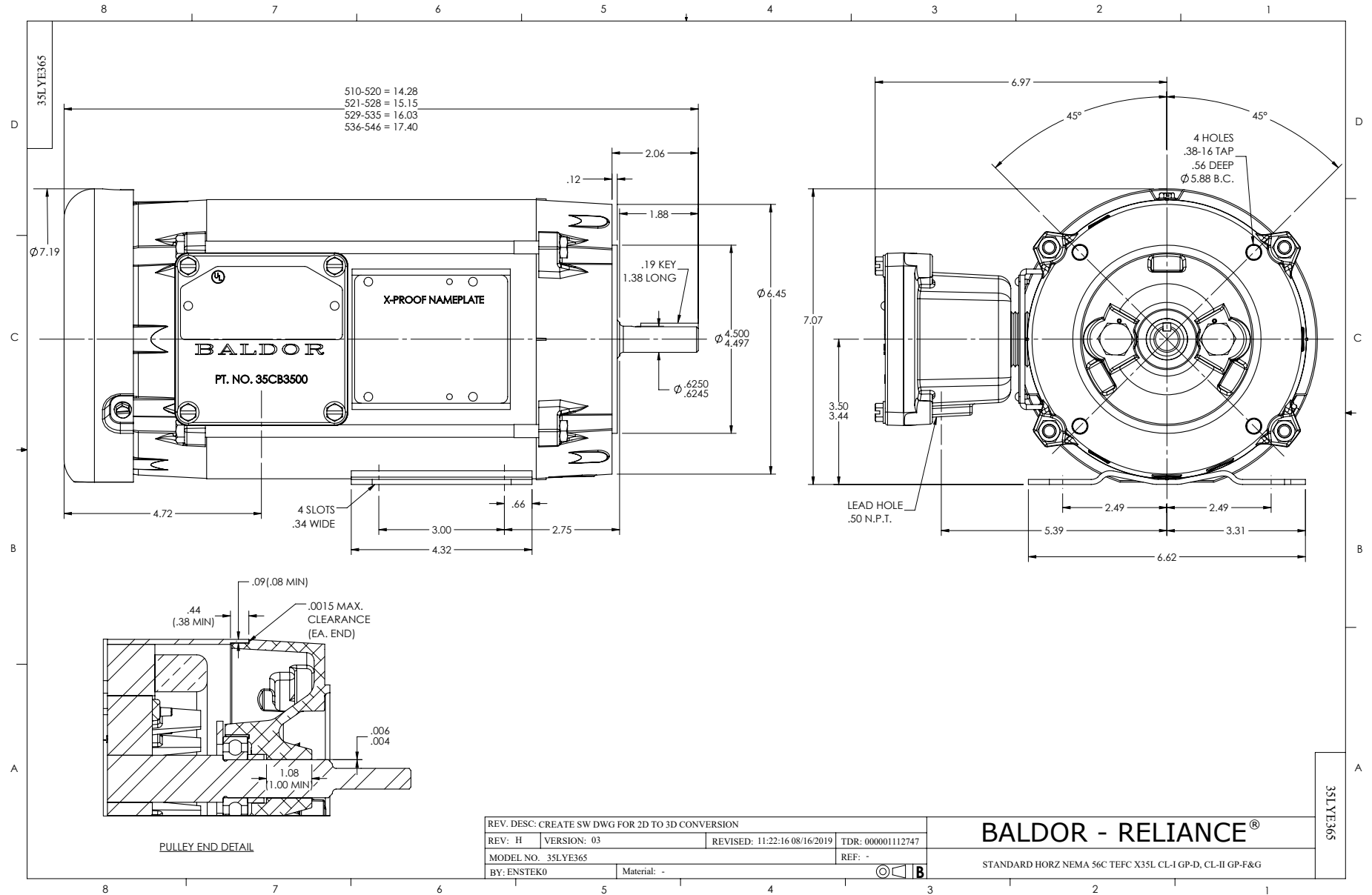
1 HP 1 PH 60 HZ 3450 RPM 230 V 3524L

Typical performance - not guaranteed values.

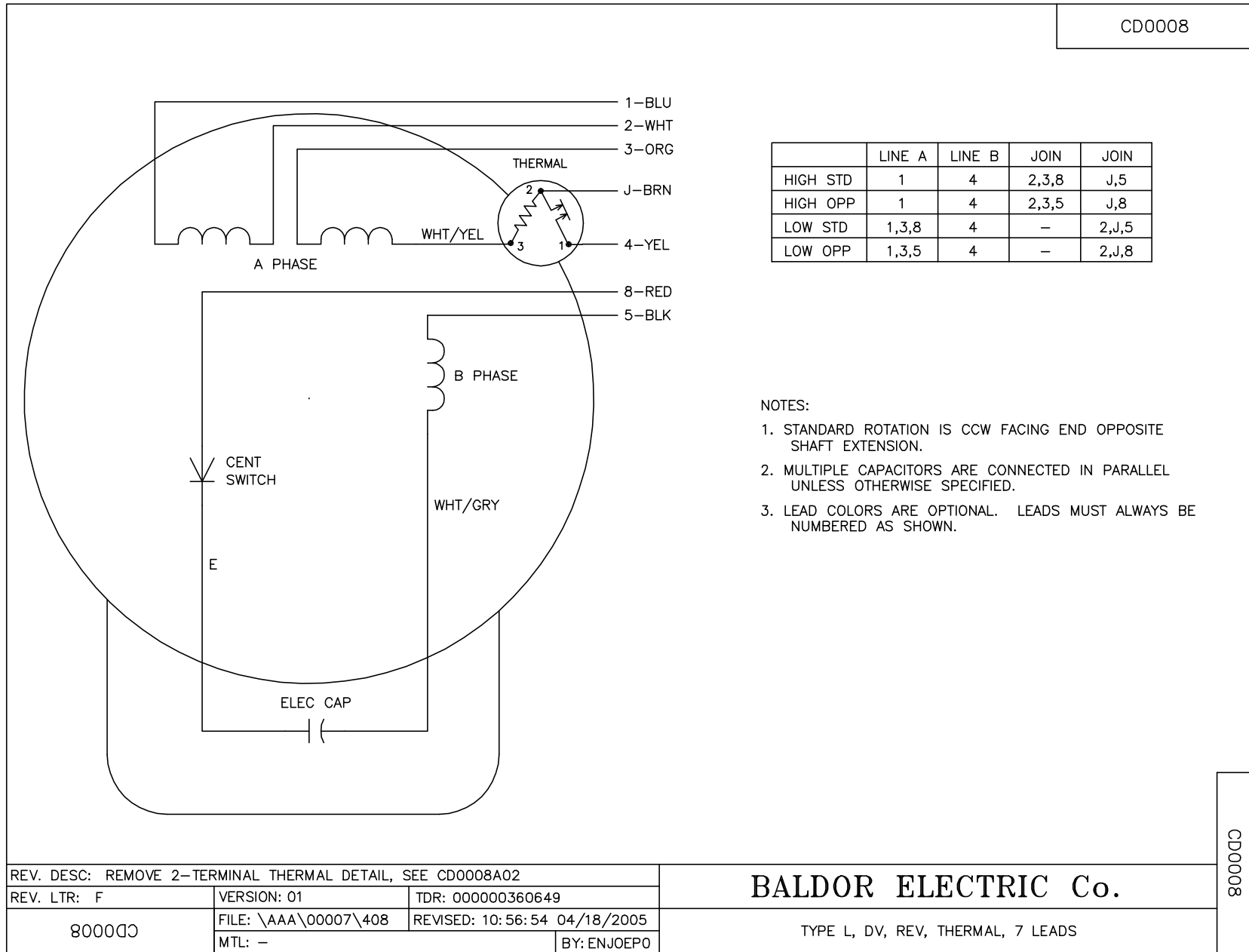
TORQUES (LB-FT): PO=4.1 PU=3.1 LR=5 LRA=38.5



9/15/2023 ACPERF, record # 61763



CD0008



REV. DESC: REMOVE 2-TERMINAL THERMAL DETAIL, SEE CD0008A02		
REV. LTR: F	VERSION: 01	TDR: 000000360649
800000	FILE: \AAA\00007\408	REVISED: 10:56:54 04/18/2005
	MTL: -	BY: ENJOEPO

BALDOR ELECTRIC Co.

TYPE L, DV, REV, THERMAL, 7 LEADS

CD0008